

Electric Banshee Kazoo Mask Plans



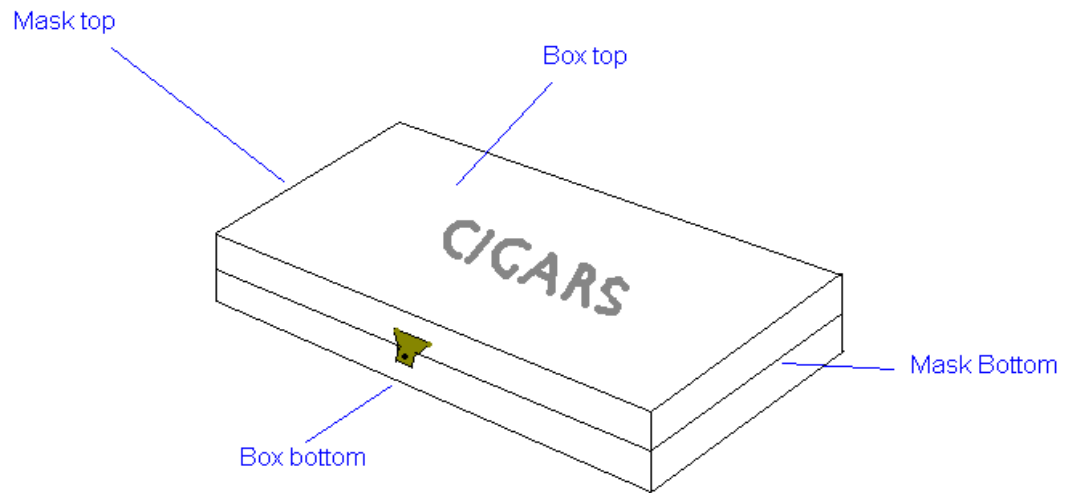
by Doctor Oakroot

www.doctoroakroot.com

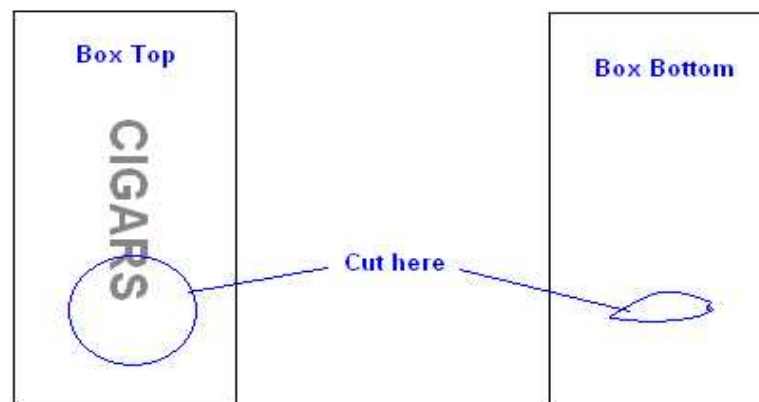
Copyright © 2009 Sunny Side Down Music. All rights reserved.

Start with a cigar box. An all wood box with nothing printed on the bottom is best.

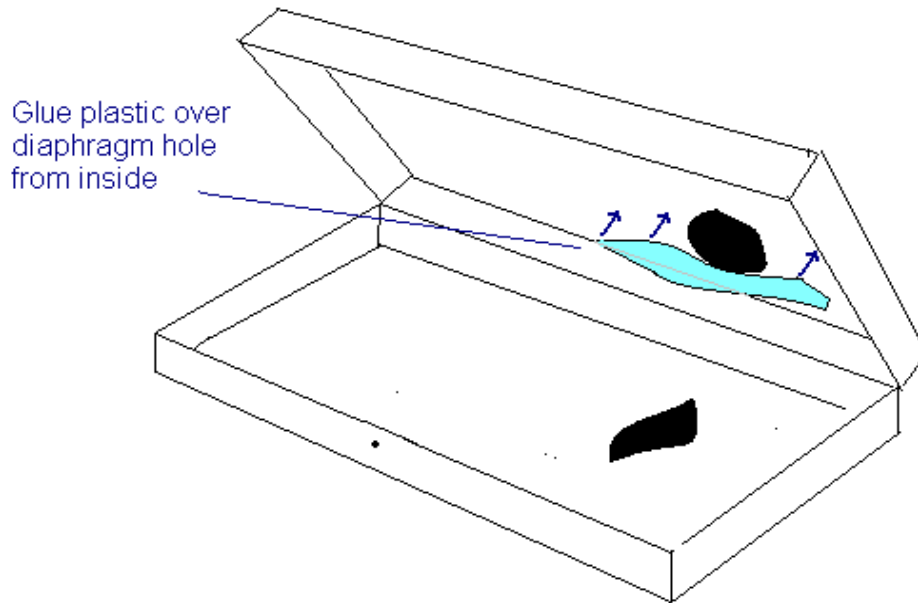
1. Pick one end to be the bottom of the mask. We'll call that the mask bottom and the other end the mask top. This is distinguished from the box top (which has the cigar maker's logo printed on it) and the box bottom (opposite the box top).



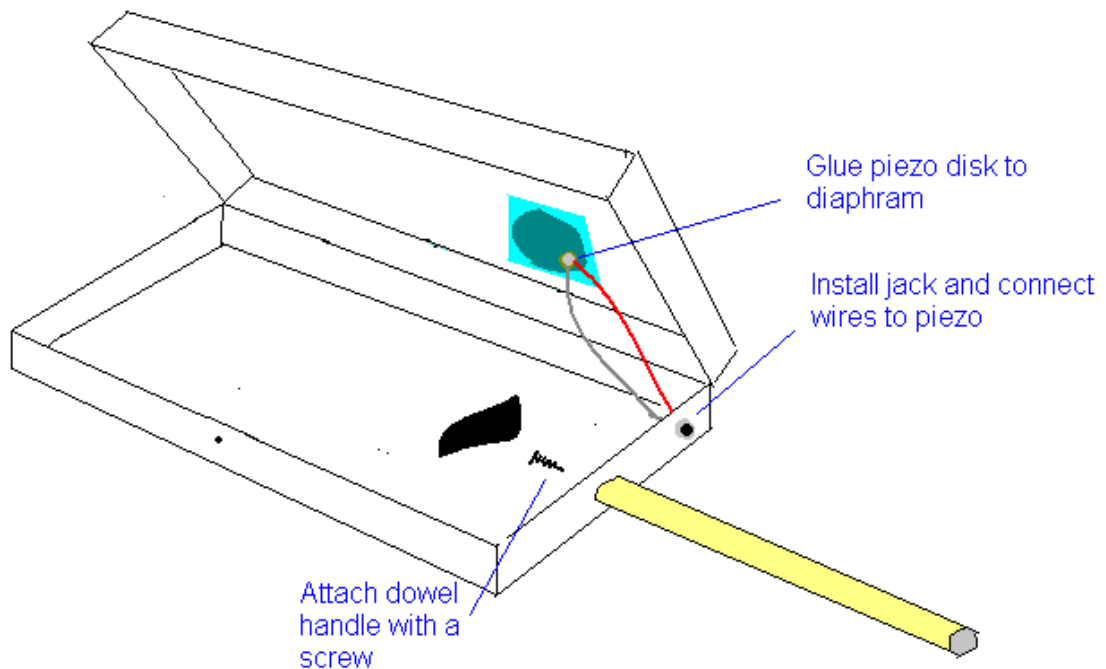
2. Near the mask bottom cut a) a 2-3 inch circular hole on the box top for mounting the diaphragm and b) a mouth-shaped sound hole on the box bottom.



3. Cut a piece of clear plastic sheet large enough to cover the diaphragm hole. You can cut up an water (Aquafina, Dasani, etc.) bottle to get the plastic. Use contact cement to glue the plastic over the diaphragm hole from the inside.
4. Use a hair dryer to heat and shrink the plastic so that it's tight.



5. Glue a piezo disk to the diaphragm.
6. Install a quarter inch jack in the mask bottom. In a typical cigar box, it will be necessary to recess the hole for the jack. A forstner bit works well for this.
7. Solder the piezo leads to the jack. (red to tip, black to sleeve).



8. Attach a dowel for a handle to the mask bottom with a screw.
9. Decorate the box bottom with a mask image (wood burning, paint, etc.)